

The logo for Gill Estates Rentals is centered within a thin gold rectangular border. It features the word "GILL" in a large, white, serif font. Below it, "ESTATES" is written in a smaller, green, sans-serif font. At the bottom, the word "RENTALS" is in a very small, white, sans-serif font, flanked by two small gold dashes.

GILL
ESTATES
• RENTALS •

Now Renting

Stylish 1 & 2 bedroom apartments
in the heart of Crystallina Nera

rentgillestates.ca

Finishes & Features

Suite Features

- Stunning quartz countertops in kitchen and bathrooms
- Sleek stainless steel kitchen appliance package
- Durable cabinets available in 2 colour choices
- Stylish vinyl plank flooring throughout
- Undermount sinks in kitchen and bathrooms
- Full-height tub surrounded by tile backsplash
- Convenient in-suite laundry
- Spacious walk-in closets
- Contemporary LED light fixtures
- Open-concept layouts with 9' ceilings and no bulkheads
- Designer roller blinds included

Building Features

- Gill Estates backs onto a beautiful green space
- Select suites feature scenic pond or park views
- Modern architectural accents including stone accents and glass balcony railings
- Well-lit and wide hallways
- Main floor social lounge
- Heated underground parking and surface parking stalls available (additional cost)
- Security cameras located on every floor and building access is limited by key fob
- Non-smoking building (includes cannabis)
- Pet friendly - Please inquire about our pet policy for more information

Community Amenities

- Near ETS bus stations and Anthony Henday Drive, allowing for convenient travel across the city
- Steps from lush greenspace, pond and walking trails
- Close to schools for children of all ages
- Minutes from all desired amenities



Explore Gill Estates





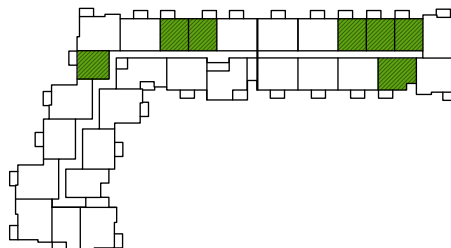
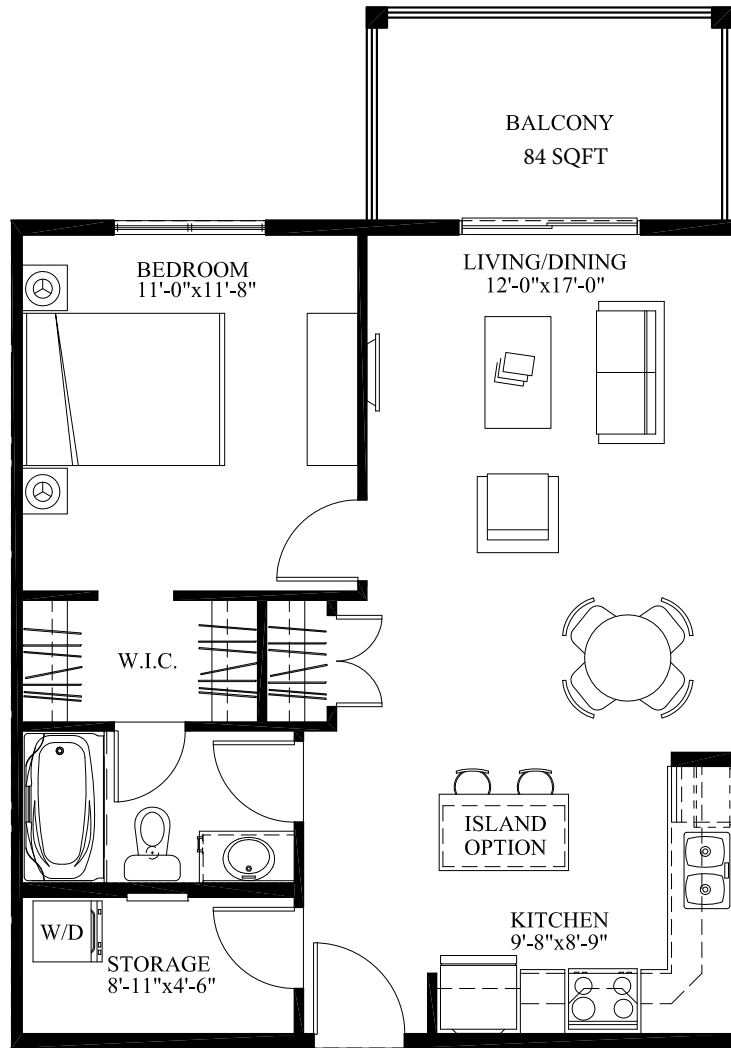
Gill Estates

Gill Estates offers brand-new rentals in a contemporary building backing onto a stunning green space. Whether you are hoping to upgrade to more space or looking to downsize – we have a floorplan to fit your lifestyle. All suites boast upscale finishes with the option to choose from stunning park or pond view. Your new home awaits at Gill Estates, nestled in Crystallina Nera, minutes from all desired amenities.

rentgillestates.ca

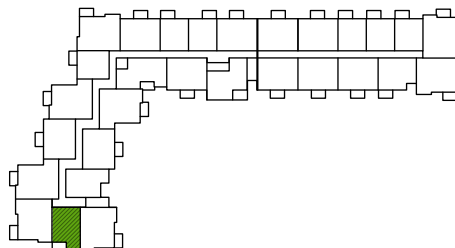
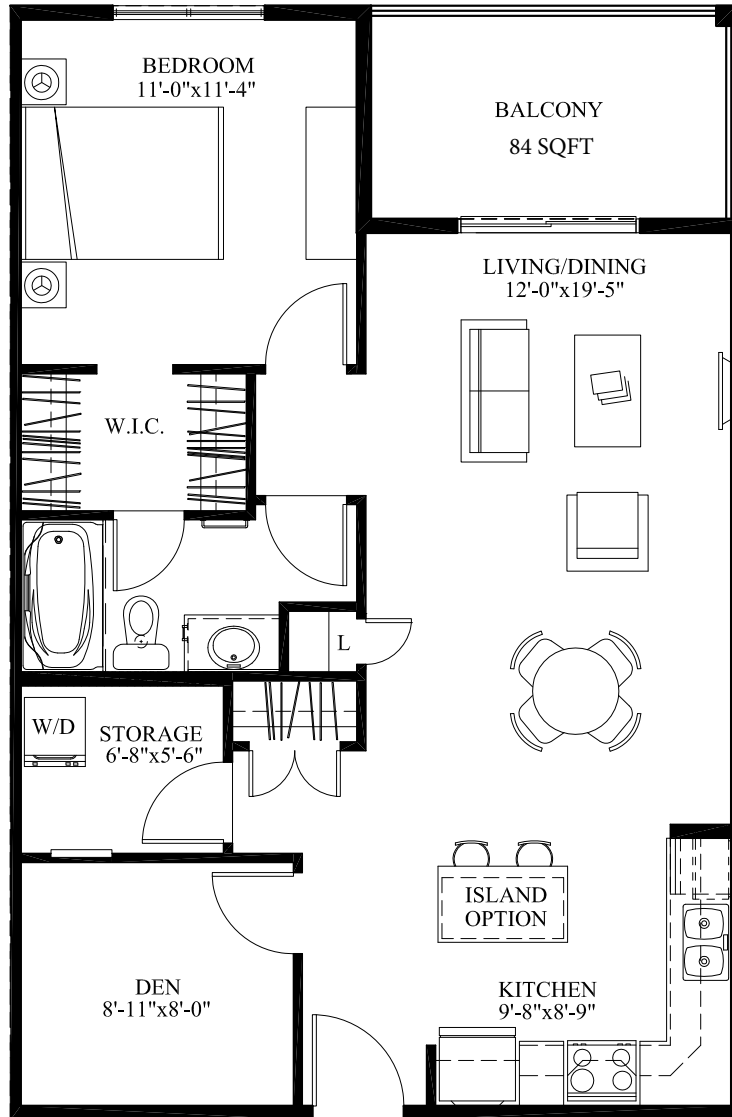
Unit A

1 BED • 1 BATH • 652 SQFT



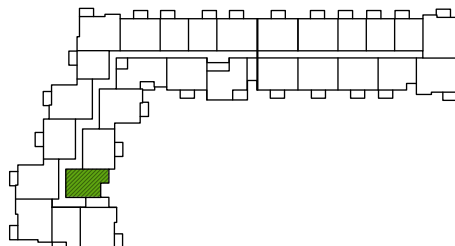
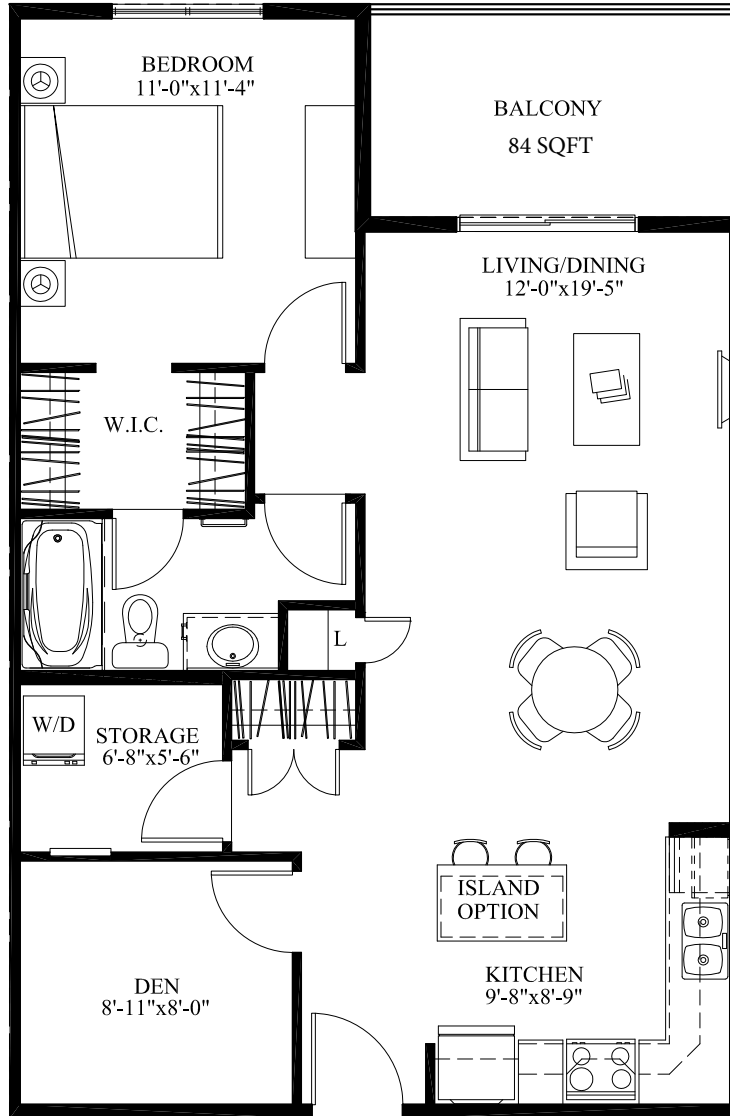
Unit A1

1 BED + DEN • 1 BATH • 793 SQFT



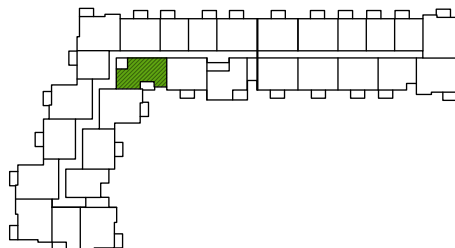
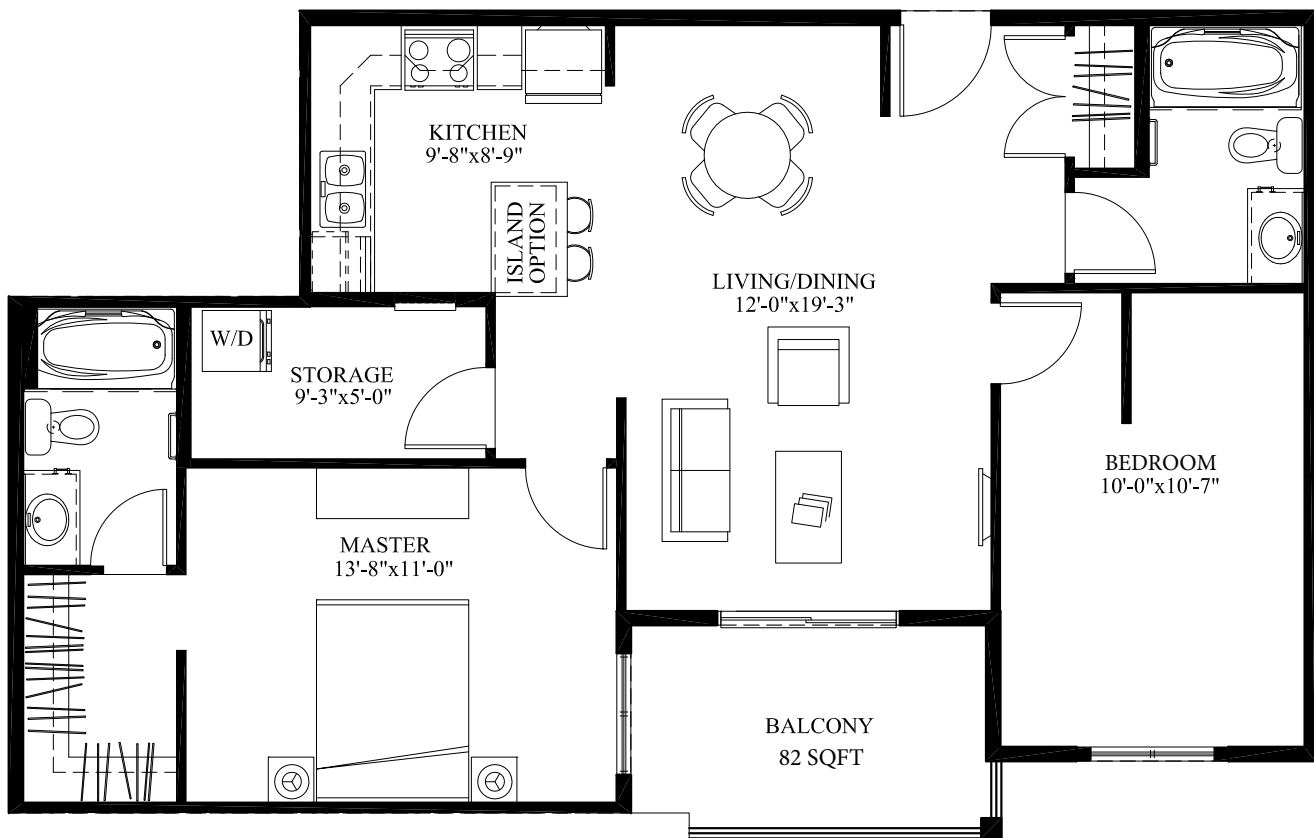
Unit A2

1 BED + DEN • 1 BATH • 900 SQFT



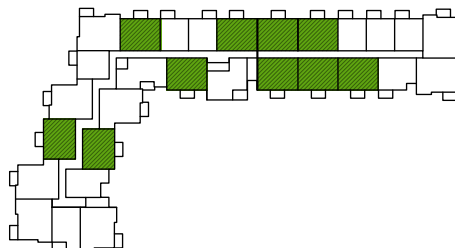
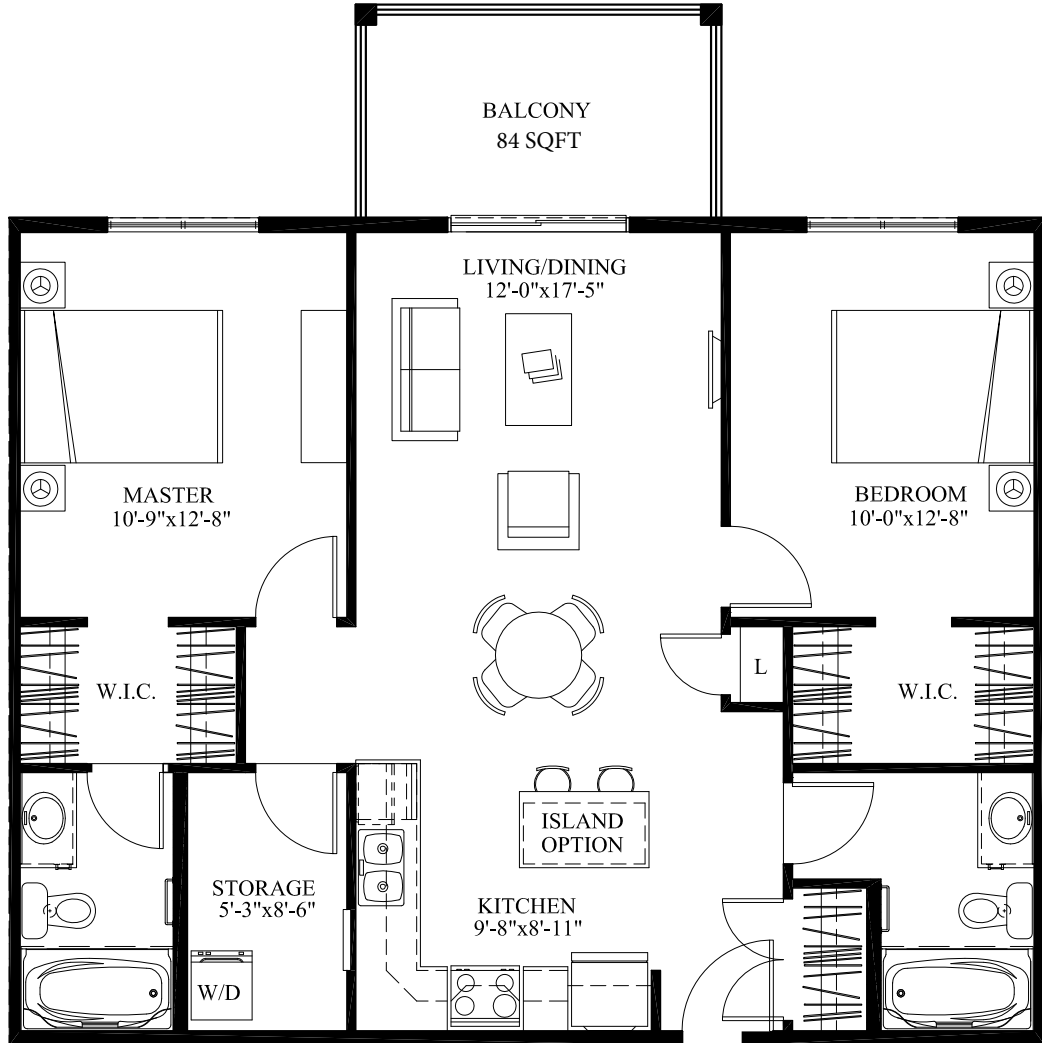
Unit A3

2 BEDS • 2 BATHS • 949 SQFT



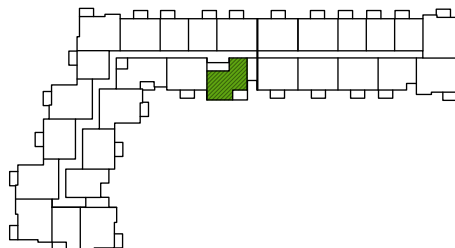
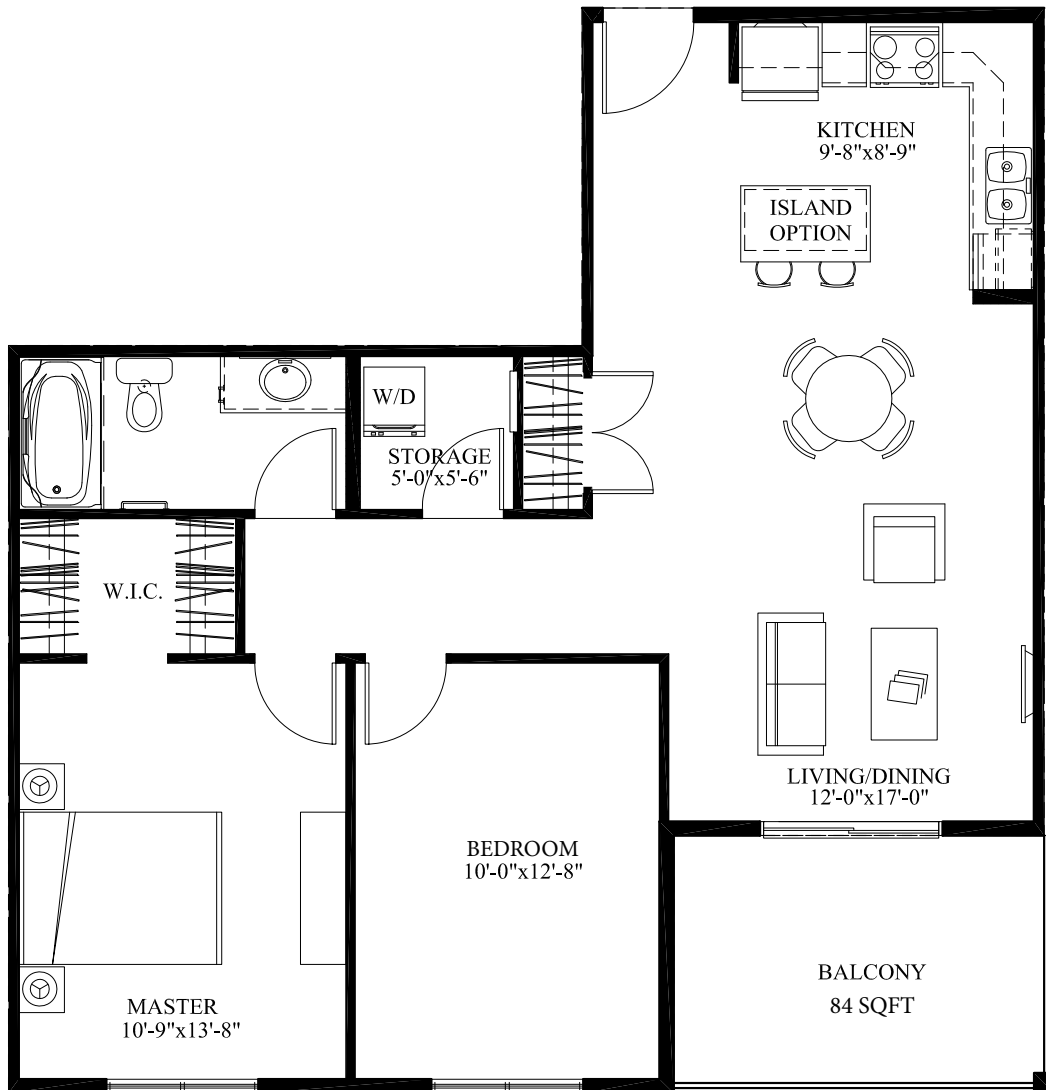
Unit B

2 BEDS • 2 BATHS • 924 SQFT



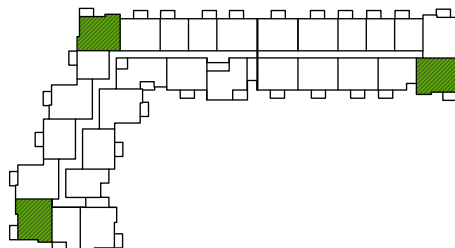
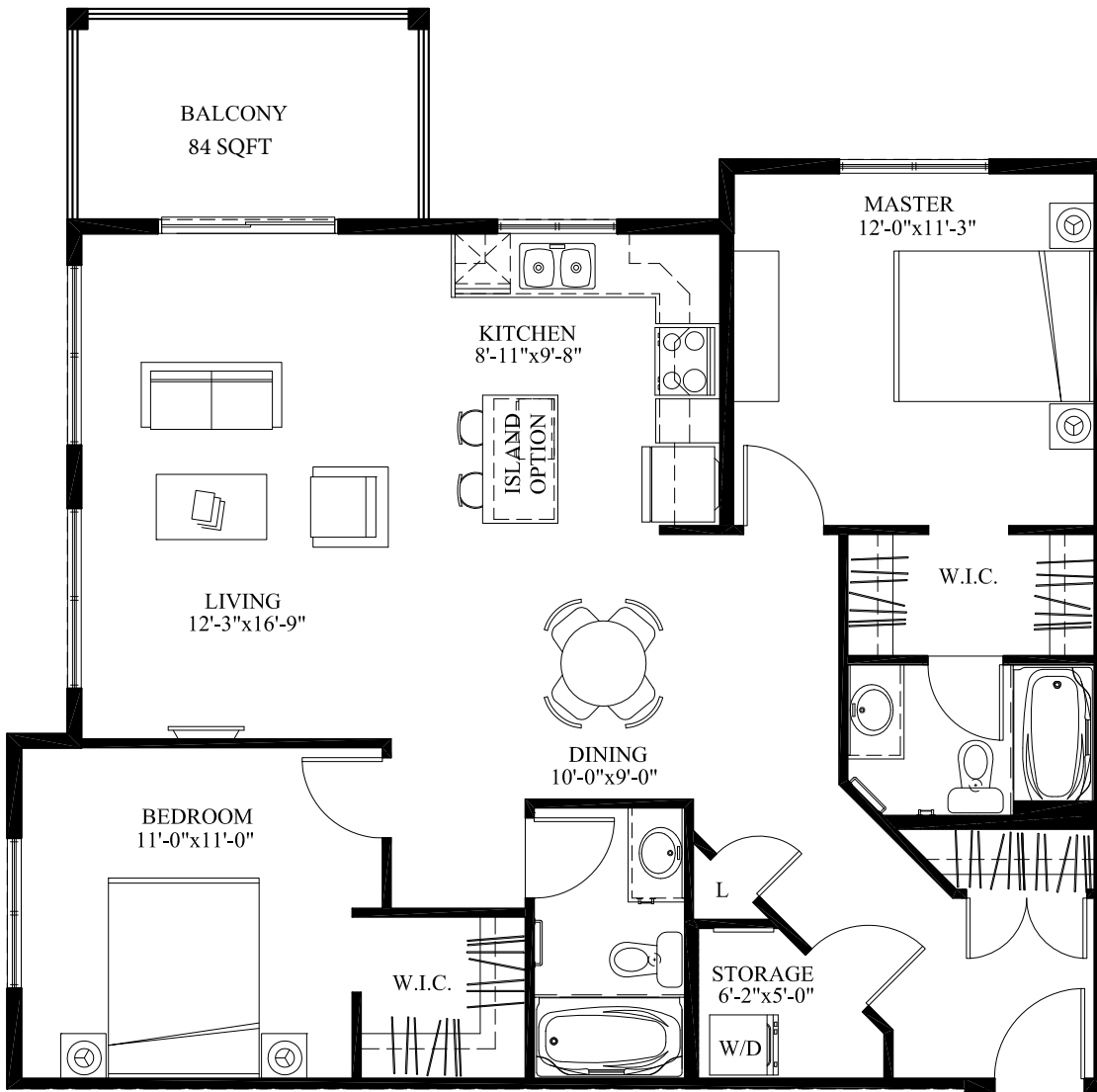
Unit B1

2 BEDS • 1 BATH • 900 SQFT



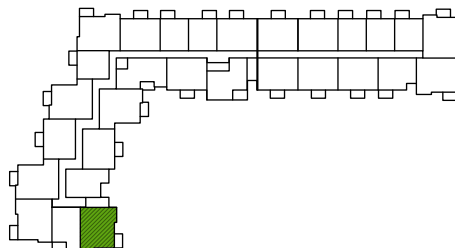
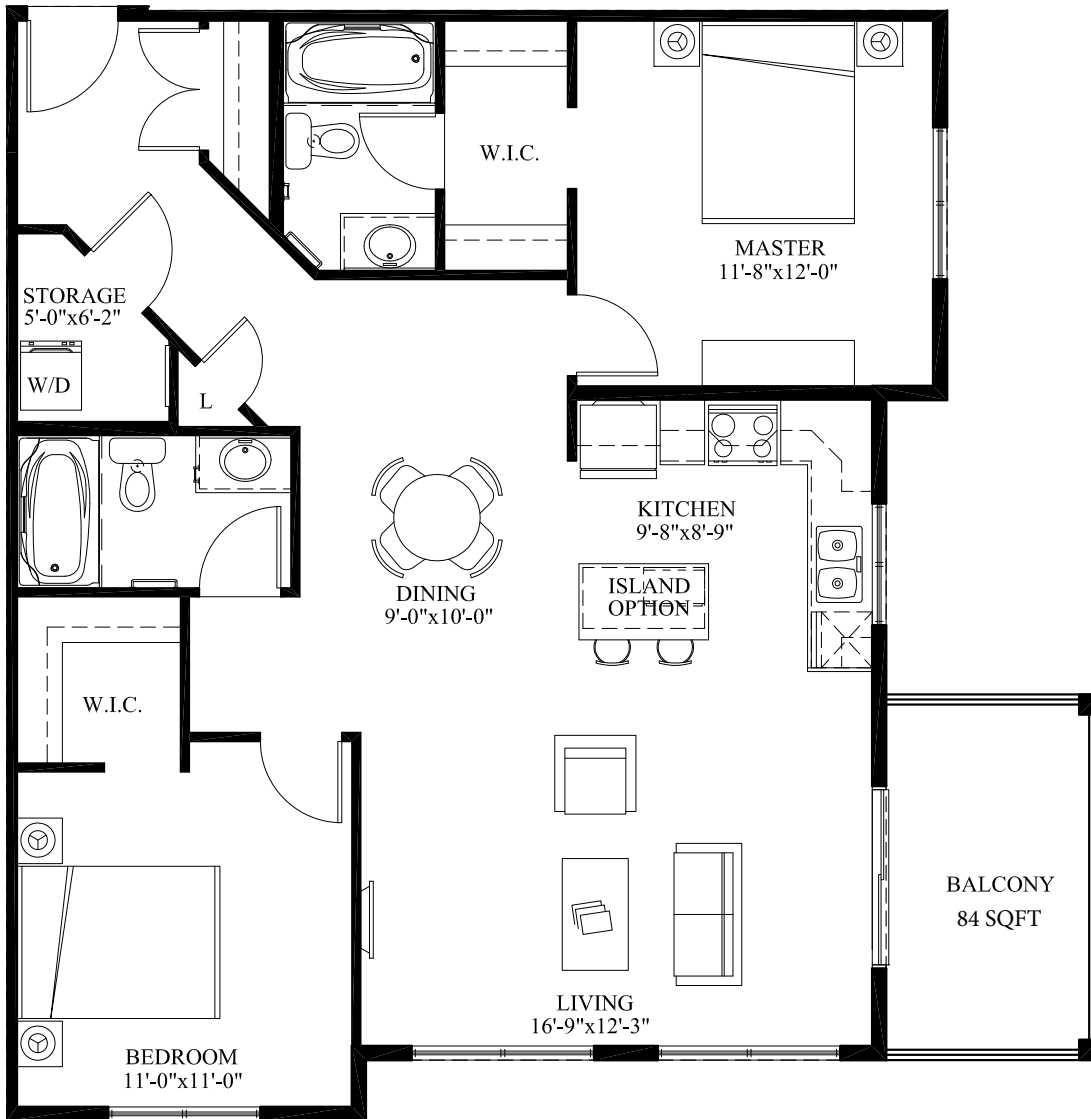
Unit C

2 BEDS • 2 BATHS • 1,045 SQFT



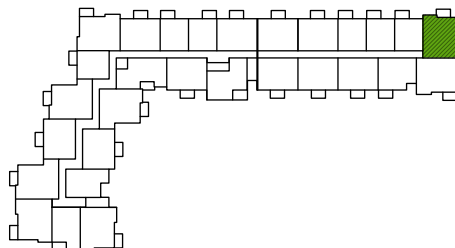
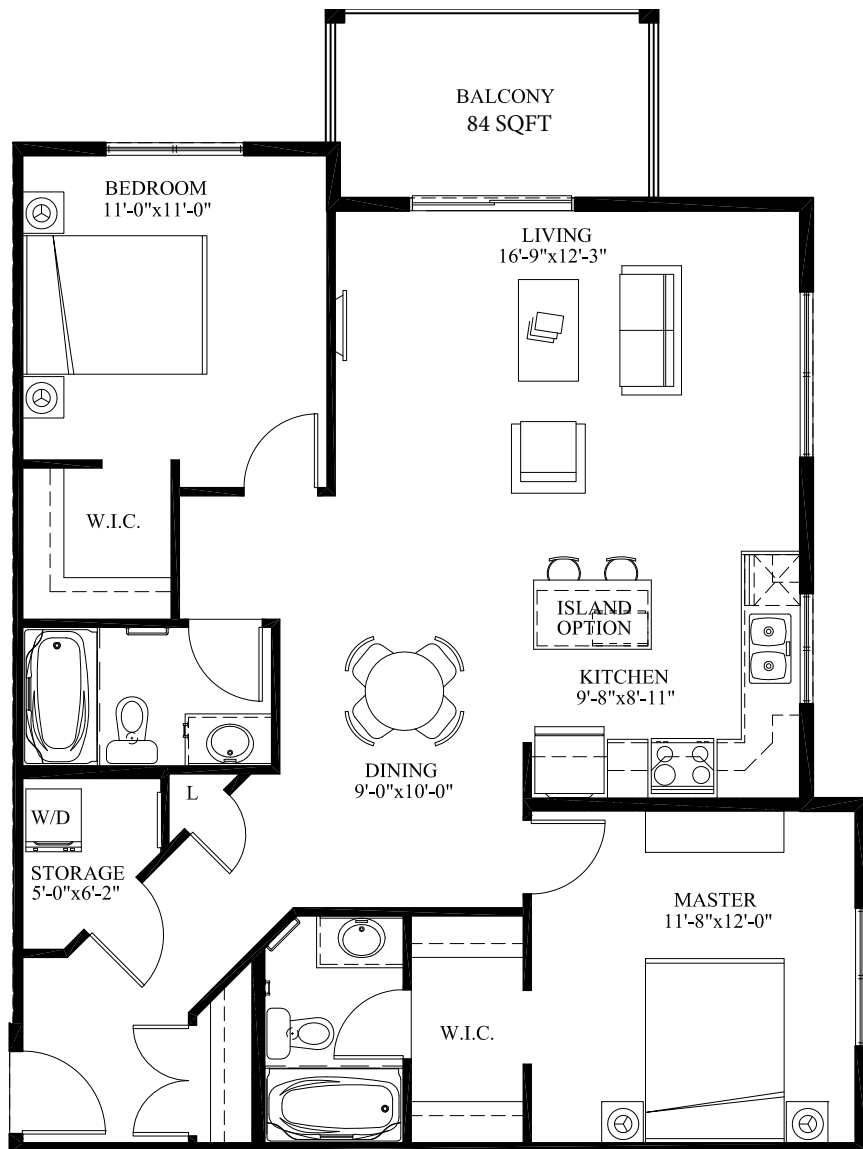
Unit C1

2 BEDS • 2 BATHS • 1,087 SQFT



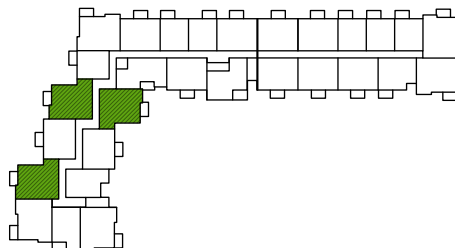
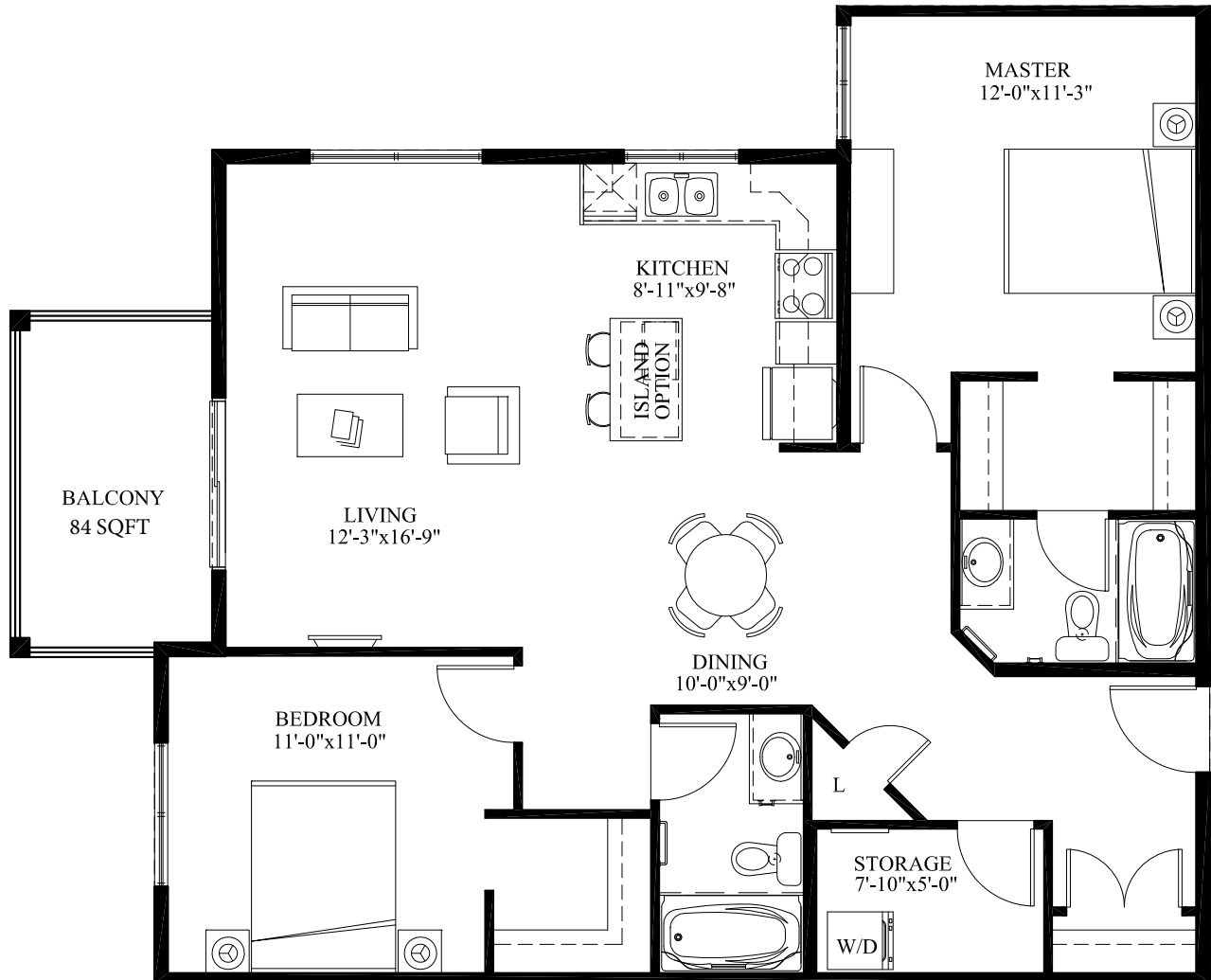
Unit C2

2 BEDS • 2 BATHS • 1,045 SQFT



Unit C3

2 BEDS • 2 BATHS • 1,087 SQFT



480 & 488 Crystallina Nera Drive
Edmonton, AB
780.473.4455
info@rentgillestates.ca



rentgillestates.ca



Visit Our Rental Office & Show Suites

Monday – Thursday: 3pm – 7pm
Saturday & Sunday: 12pm – 5pm

Developed By:

